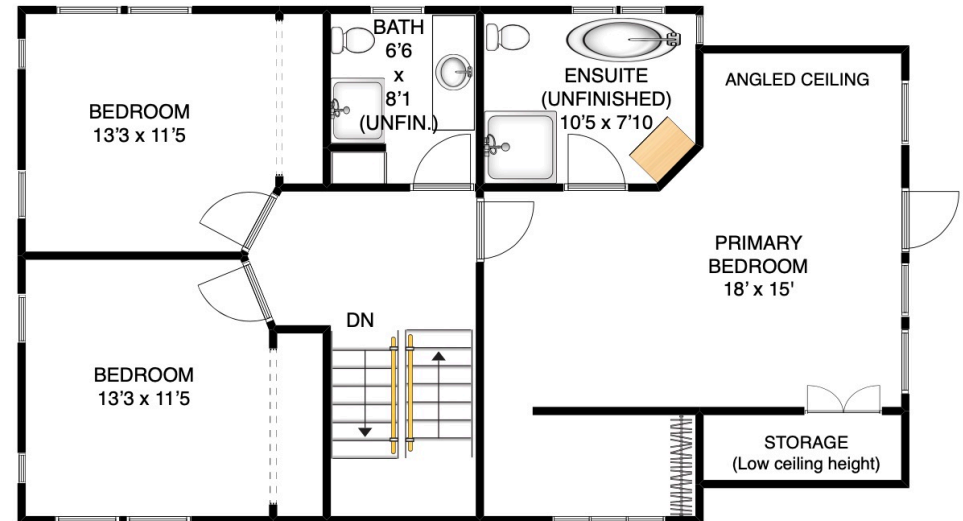


MAIN FLOOR



UPPER FLOOR



FRANCES FROST
 PERSONAL REAL ESTATE CORPORATION
bowenislandrealestate.info
 604.947.9090
 #3 - 479 Bowen Trunk Rd.
 Bowen Island

ADDRESS
1256 EAGLES NEST ROAD
BOWEN ISLAND
BC
V0N 1G1

AREA CALCULATION

TOTAL AREA SQFT: 1820 sq ft
DECK: 350 sqft

NOTES

FLOOR PLAN MEASUREMENTS, DIMENSIONS, SQUARE FOOTAGE, EXISTING STRUCTURES & FEATURES ARE APPROXIMATIONS AND FOR ILLUSTRATIVE PURPOSES ONLY. WE MAKE NO GUARANTEE, EXPRESSED OR IMPLIED, AS TO THE ACCURACY AND COMPLETENESS OF THIS RENDERING.